






MIG/MAG Welding torches
TBi Top 2000




Gas cooled torches

	TBi 3G (DR) 60% (10 min.) Mix: 180 A CO ₂ : 200 A Ø 0.8-1.2 mm		TBi 6G 60% (10 min.) Mix: 350 A CO ₂ : 380 A Ø 1.0-1.6 mm
page 4-5		page 6-7	
	TBi 7G (S,L,DR) 60% (10 min.) Mix: 310 A (S: 240 A, DR: 220 A) CO ₂ : 340 A (S: 270 A, DR: 250 A) Ø 1.0-1.6 mm		TBi 8G 60% (10 min.) Mix: 400 A CO ₂ : 430 A Ø 1.2-3.2 mm
page 8-9		page 10-11	

Water cooled torches

	TBi 7W (S,L) 100% (10 min.) Mix: 450 A (S: 400 A) CO ₂ : 500 A (S: 450 A) Ø 1.0-1.6 mm		TBi 8W 100% (10 min.) Mix: 500 A CO ₂ : 550 A Ø 1.2-3.2 mm		TBi 9W (S,L,Alu) 100% (10 min.) Mix: 500 A CO ₂ : 550 A Ø 1.0-1.6 mm with 2-circuit cooling
page 12-13		page 14-15		page 16-17	
	TBi 9W 3C 100% (10 min.) Mix: 600 A CO ₂ : 650 A Ø 1.2-1.6 mm with 3-circuit cooling		TBi 10W 100% (10 min.) Mix: 650 A CO ₂ : 700 A Ø 1.6-3.2 mm with 2-circuit cooling		
page 18-19		page 20-21			

	Wire guides page 22
---	---

	Remote Control Modules page 23
--	--

Technical Data

Rating at 60% duty cycle
(10 min. cycle)

- Mixed gas: 180 A
- CO₂: 200 A

Cooling method Gas cooling

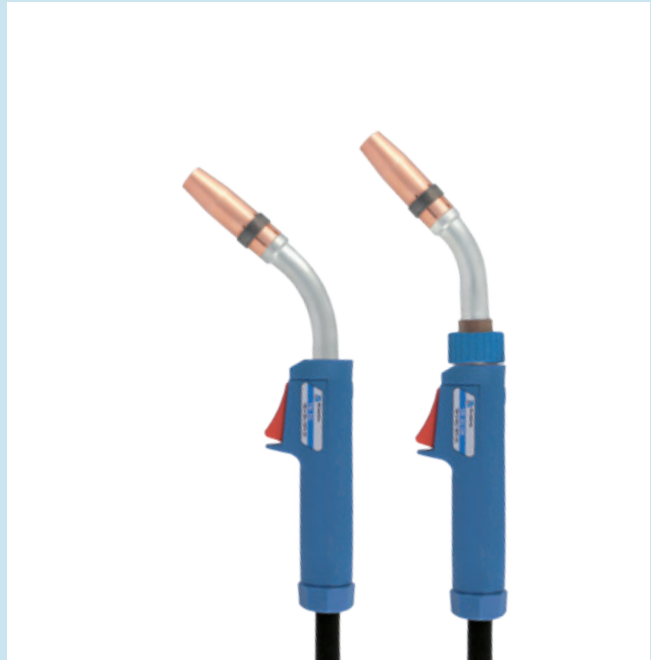
Wire diameter 0.8 - 1.2 mm

Gas flow 8 l/min


Technical specification according to IEC 60974-7

Connection Euro-Central connector
Other connectors are available upon request.

Torch rating will be reduced when using pulsed-arc power sources.




Contact tips

	Pos.	Part no.
M6 	▶ 10 ECu, M6 x 28	340P__1069*
	CuCrZr, M6x28	340P__3069*
	Alu, ECu, M6x28	341P__1069*

▶ = Standard equipment

* At the blank, please insert suitable information for torch length or wire diameter, e.g. 3 for 3 m or 08 for 0.8 mm.

Tip holder

	Pos.	Part no.
	▶ 20 for contact tip M6, CuCrZr	342P006117

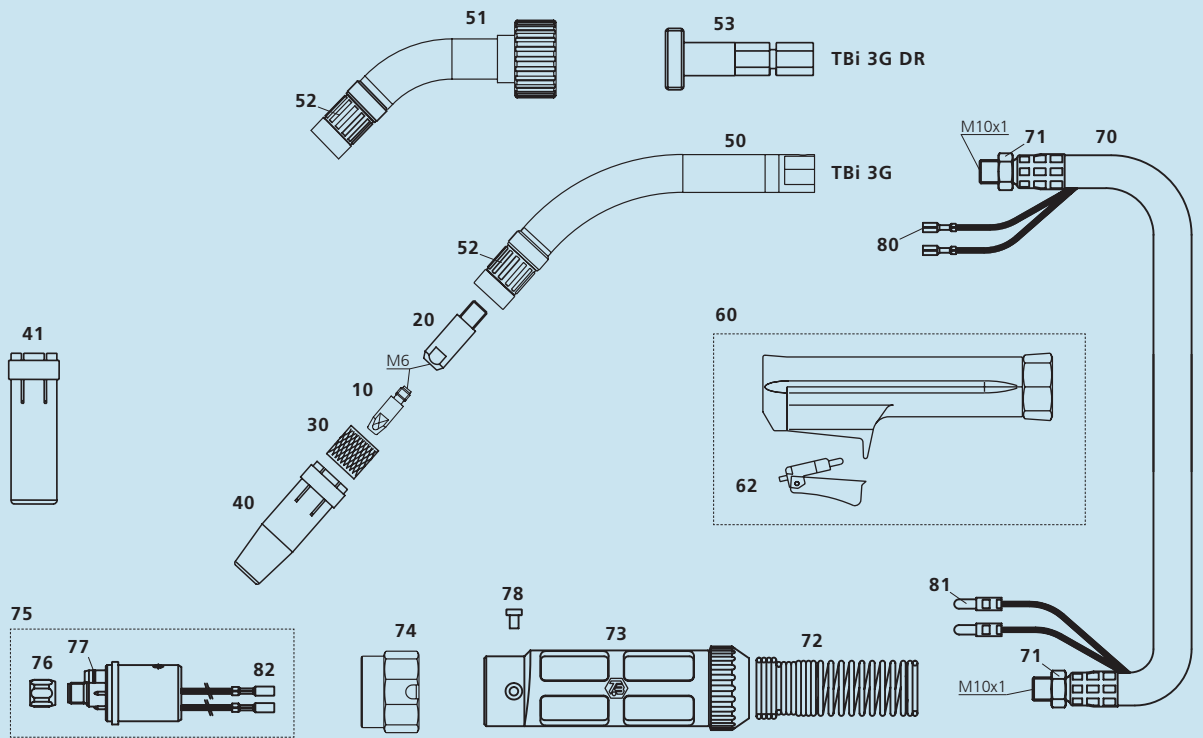
Ordering information for torches

Supplied equipped for steel wire Ø 1.0 mm

TBi 3G	with Euro central connector	3 m	117P311330
		4 m	117P311340
		5 m	117P311350
TBi 3G DR	with Euro central connector	3 m	117P31133D
		4 m	117P31134D
		5 m	117P31135D

Spare parts

Pos.	Description	Part no.
50	Torch neck TBi 3G, 50°	117P101001
51	Torch neck TBi 3G DR, 45°	117P101010
52	Clamping ring	110P102016
53	Support for DR neck (3G)	110P102014
60	Handle small, blue, cpl. (3G DR)	380P220002
60	Handle small, blue, cpl. (3G)	380P220003
62	Trigger, red, 2 poles	385P021016



Nozzle insulator

Pos.	Description	Part no.
▶ 30	glass-fiber, white	346P012117

Gas nozzle

Pos.	Description	Part no.
▶ 40	conical, NW 12.5 mm L= 63.5 mm with insulator	345P012117
▶ 41	cylindrical, NW 17 mm L= 63.5 mm with insulator	345P011117

Pos.	Description	Part no.	Pos.	Description	Part no.
70	Coaxial cable TBi ProFlex M	361P0M11_0*	80	Cable lug, flat	375P000023
71	Hex nut M10x1	101P002005	81	Insulated connector, male, round	375P000004
72	Spring support small 16-50 sqmm	600P102099	82	Insulated connector, female, round	375P000003
73	Cable support cpl. (2 pieces)	701P001045			
74	Brass adaptor nut	701P001013			
75	Central adaptor ESG cpl., 2 poles, moveable pins	701P001048			
76	Sleeve nut M10x1	701P002005			
77	O-ring 4.0x1.0 mm (gas nipple)	365P100040			
78	Slotted screw M4x6	100P008401			

Technical Data

Rating at 60% duty cycle
(10 min. cycle)

- Mixed gas: 350 A
- CO₂: 380 A

Cooling method Gas cooling

Wire diameter 1.0 - 1.6 mm

Gas flow 15 l/min

Technical specification according to IEC 60974-7

Connection Euro-Central connector
Other connectors are available upon request.

Torch rating will be reduced when using pulsed-arc power sources.



Contact tips

	Pos.	Description	Part no.
M10	▶ 10	ECu, M10 x 33 CuCrZr, M10 x 33	340P__1402* 343P__3402*
	11	ECu, M8 x 30 CuCrZr, M8 x 30 Alu, ECu, M8 x 30	340P__1262* 340P__3262* 341P__1262*

Tip holder

Pos.	Description	Part no.
▶ 20	for contact tip M10, CuCrZr	342P010065
21	for contact tip M8, CuCrZr	342P008065

▶ = Standard equipment

* At the blank, please insert suitable information for torch length or wire diameter, e.g. 3 for 3 m or 08 for 0.8 mm.

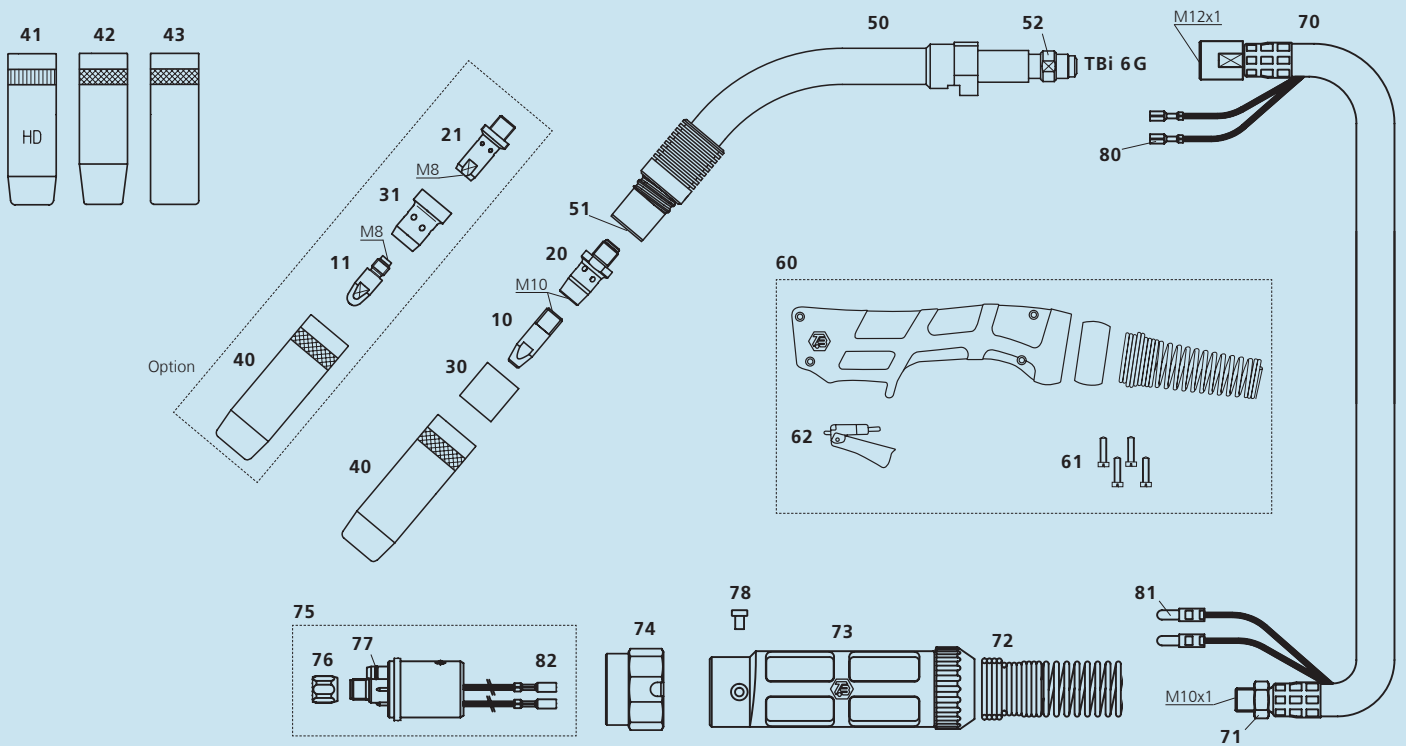
Ordering information for torches

Supplied equipped for steel wire Ø 1.2 mm

TBi 6G	with Euro central connector	3 m	4 m	5 m
		165P342330	165P342340	165P342350

Spare parts

Pos.	Description	Part no.
50	Torch neck TBi 6G, 50°	165P101020
51	Insulating washer	130P002003
52	Nut M12x1	165P102006
60	Handle blue, cpl. kit (TBi 6G)	380P220403
61	Cross recessed screw M3.5x14	100P008413
62	Trigger, red, 2 poles	385P021016



Nozzle insulator

Pos.	Description	Part no.
30	glass-fiber, white	346P054860

Gas diffuser

Pos.	Description	Part no.
31	thermoset, black	130P002026
	ceramic, white	130P002019
	thermoset HD, brown	130P002031

Gas nozzle

Pos.	Description	Part no.
40	conical, NW 16 mm L= 75.5 mm	345P022171
41	conical, NW 16 mm Heavy Duty L= 75.5 mm	345P022271
42	conical, NW 14 mm L= 75.5 mm	345P023171
43	cylindrical, NW 19 mm L= 75.5 mm	345P021171

Pos.	Description	Part no.
70	Coaxial cable TBi ProFlex XL	361PXL81_0*
71	Hex nut M10x1	101P002005
72	Spring support small 16-50 sqmm	600P102099
73	Cable support cpl. (2 pieces)	701P001045
74	Adaptor nut	701P001013
75	Central adaptor ESG cpl., 2 poles, moveable pins	701P001048
76	Sleeve nut M10x1	701P002005
77	O-ring 4.0x1.0 mm (gas nipple)	365P100040
78	Slotted screw M4x6	100P008401

Pos.	Description	Part no.
80	Cable lug, flat	375P000023
81	Insulated connector, male, round	375P000004
82	Insulated connector, female, round	375P000003

Technical Data

Rating at 60% duty cycle
(10 min. cycle)

- Mixed gas: 310 A (7G-S: 240 A, 7G DR: 220 A)
- CO₂: 340 A (7G-S: 270 A, 7G DR: 250 A)

Cooling method Gas cooling

Wire diameter 1.0 - 1.6 mm

Gas flow 15 l/min

Technical specification according to IEC 60974-7

Connection Euro-Central connector
Other connectors are available upon request.

Torch rating will be reduced when using pulsed-arc power sources.



Contact tips

	Pos.		Part no.
M8	▶ 10	ECu, M8 x 30	340P__1262*
		CuCrZr, M8x30	340P__3262*
		Alu, ECu, M8x30	341P__1262*
M6	▶ 11	ECu, M6x28	340P__1069*
		CuCrZr, M6x28	340P__3069*
		Alu, ECu, M6x28	341P__1069*

Tip holder

	Pos.		Part no.
	▶ 20	for contact tip M8	342P008033
		for contact tip M8, 4 mm longer version	342P008133
		for contact tip M8	342P008171
	▶ 21	for contact tip M6	342P006033
		for contact tip M6, 4 mm longer version	342P006133

▶ = Standard equipment

* At the blank, please insert suitable information for torch length or wire diameter, e.g. 3 for 3 m or 08 for 0.8 mm.

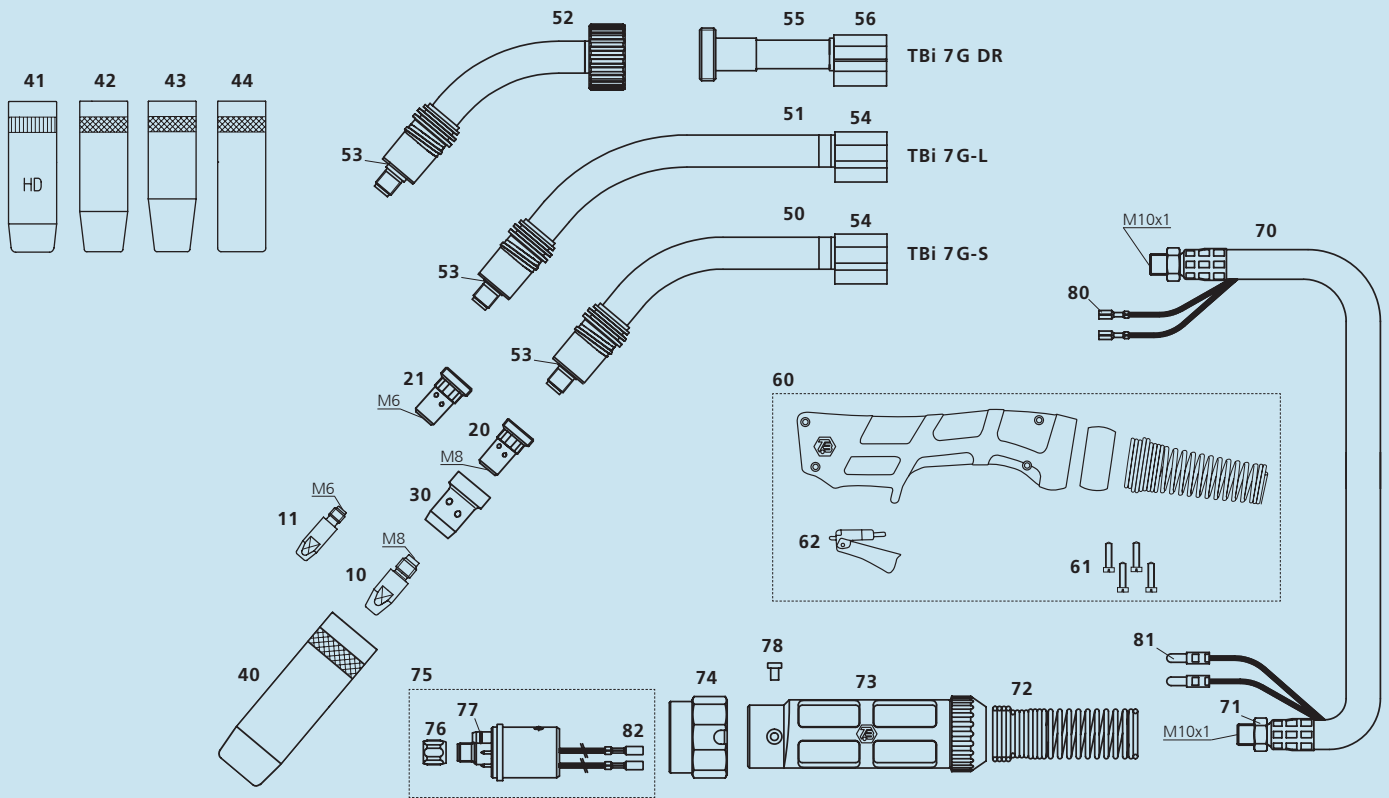
Ordering information for torches

Supplied equipped for steel wire Ø 1.0 mm

Torch	Connector	Length	Part no.
TBi 7G-S	with Euro central connector	3 m	166P342330
		4 m	166P342340
		5 m	166P342350
TBi 7G-L	with Euro central connector	3 m	166P442330
		4 m	166P442340
		5 m	166P442350
TBi 7G DR	with Euro central connector	3 m	166P34233D
		4 m	166P34234D
		5 m	166P34235D

Spare parts

Pos.	Description	Part no.
50	Torch neck TBi 7G-S, 50°	166P101140
51	Torch neck TBi 7G-L, 50°	166P101150
52	Torch neck TBi 7G DR, 45°	166P101130
53	Insulating washer	130P002004
54	PVC body	600P002018
55	Support for DR necks	600P101045
56	PVC body	600P002017
60	Handle blue, aircooled, cpl. kit	380P220400
61	Cross recessed screw M3.5x14	100P008413
62	Trigger, red, 2 poles	385P021016

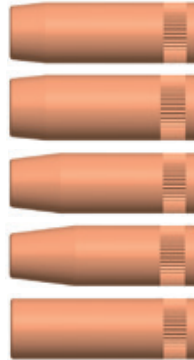


Gas diffuser



Pos.	Description	Part no.
▶ 30	thermoset, black	130P002026
	ceramic, white	130P002019
	thermoset HD, brown	130P002031

Gas nozzle



Pos.	Description	Part no.
▶ 40	conical, NW 16 mm L= 75.5 mm	345P022171
41	conical, NW 16 mm Heavy Duty L= 75.5 mm	345P022271
42	conical, NW 14 mm L= 75.5 mm	345P023171
43	conical, NW 12 mm only for M6 L= 75.5 mm	345P026171
44	cylindrical, NW 19 mm L= 75.5 mm	345P021171

Pos.	Description	Part no.
70	Coaxial cable TBi ProFlex ML (7G-S / 7G DR)	361PML11_0*
70	Coaxial cable TBi ProFlex L (7G-L)	361POL11_0*
71	Hex nut M10x1	101P002005
72	Spring support small 16-50 sqmm	600P102099
73	Cable support cpl. (2 pieces)	701P001045
74	Adaptor nut	701P001013
75	Central adaptor ESG cpl., 2 poles, moveable pins	701P001048
76	Sleeve nut M10x1	701P002005
77	O-ring 4.0x1.0 mm (gas nipple)	365P100040
78	Slotted screw M4x6	100P008401

Pos.	Description	Part no.
80	Cable lug, flat	375P000023
81	Insulated connector, male, round	375P000004
82	Insulated connector, female, round	375P000003

Technical Data

Rating at 60% duty cycle
(10 min. cycle)

- Mixed gas: 400 A
- CO₂: 430 A

Cooling method Gas cooling

Wire diameter 1.2 - 3.2 mm

Gas flow 28 l/min

Technical specification according to IEC 60974-7

Connection Euro-Central connector
Other connectors are available upon request.

Torch rating will be reduced when using pulsed-arc power sources.



Contact tips

	Pos.		Part no.
M10	▶ 10	ECu, M10x33 CuCrZr, M10x33	340P__1402* 343P__3402*
	11	ECu, M8x30 CuCrZr, M8x30 Alu, ECu, M8x30	340P__1262* 340P__3262* 341P__1262*

Tip holder

	Pos.		Part no.
	▶ 20	for contact tip M10, CuCrZ	342P010072
	21	for contact tip M8, CuCrZr	342P008072

▶ = Standard equipment

* At the blank, please insert suitable information for torch length or wire diameter, e.g. 3 for 3 m or 08 for 0.8 mm.

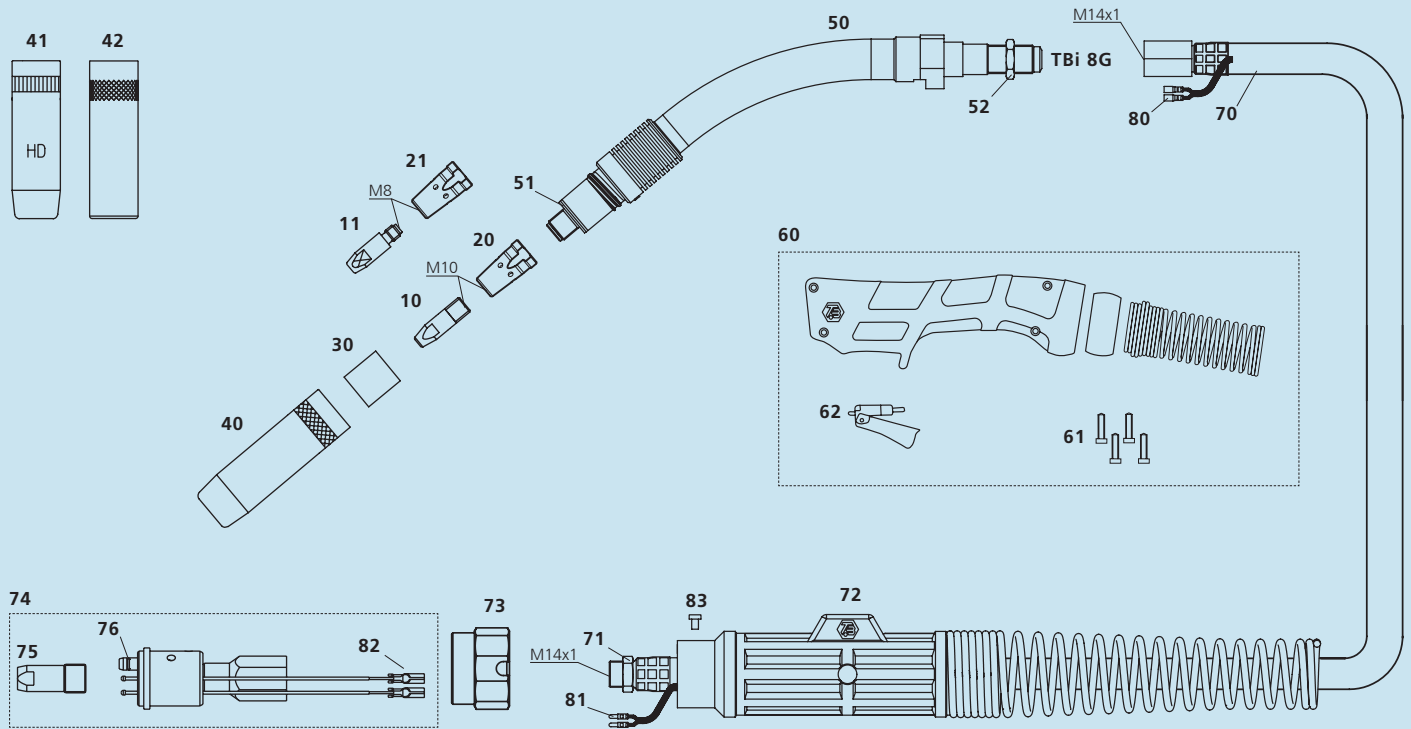
Ordering information for torches

Supplied equipped for steel wire Ø 1.6 mm

TBi 8G	with Euro central connector RGZ	3 m	163P3Y2330
		4 m	163P3Y2340
		5 m	163P3Y2350

Spare parts

Pos.	Description	Part no.
50	Torch neck TBi 8G, 40° (Version 2010)	163P101008
51	Insulating washer	130P002003
52	Hex nut M14x1	600P002025
60	Handle blue, cpl. kit (TBi 8G 2010)	380P220414
61	Cross recessed screw M3.5x14	100P008413
62	Trigger, red, 2 poles	385P021016



Nozzle insulator

Pos.	Description	Part no.
30	glass-fiber, white	346P054860

Gas nozzle

Pos.	Description	Part no.
40	conical, NW 16 mm nickel plated L= 80.5 mm	345P022173
41	conical, NW 16 mm Heavy Duty L= 80.5 mm	345P922271
42	cylindrical, NW 19 mm nickel plated L= 80.5 mm	345P021071

Pos.	Description	Part no.
70	TBi-Flex coaxial cable 70 sqmm (8G)	357P7022_0*
71	Hex nut M14x1	700P002046
72	Cable support 3 parts cpl. with spring	701P101071
73	Adaptor nut	701P001013
74	Central adaptor RGZ cpl., moveable pins	701P001058
75	Centering bolt M14x1 RGZ / RWZ	701P002083
76	O-ring 4.0x1.0 mm (gas nipple)	365P100040

Pos.	Description	Part no.
80	Cable lug, flat	375P000023
81	Insulated connector, male, round	375P000004
82	Insulated connector, female, round	375P000003
83	Slotted screw M4x6	100P008401

Technical Data

Rating at 100% duty cycle
(10 min. cycle)

- Mixed gas: 450 A (TBi 7W-S: 400 A)
- CO₂: 500 A (TBi 7W-S: 450 A)

Cooling method Water cooling

Wire diameter 1.0 - 1.6 mm

Gas flow 15 l/min

Technical specification according to IEC 60974-7

Connection Euro-Central connector
Other connectors are available upon request.

Torch rating will be reduced when using pulsed-arc power sources.



Contact tips

	Pos.		Part no.
M8	▶ 10	ECu, M8 x 30	340P__1262*
		CuCrZr, M8x30	340P__3262*
		Alu, ECu, M8x30	341P__1262*
M6	11	ECu, M6x28	340P__1069*
		CuCrZr, M6x28	340P__3069*
		Alu, ECu, M6x28	341P__1069*

Tip holder

	Pos.		Part no.
	▶ 20	for contact tip M8	342P008033
		for M8, CuCrZr for opt. cooling	342P008171
		for contact tip M8, 4 mm longer version	342P008133
	21	for contact tip M6	342P006033
		for contact tip M6, 4 mm longer version	342P006133

▶ = Standard equipment

* At the blank, please insert suitable information for torch length or wire diameter, e.g. 3 for 3 m or 08 for 0.8 mm.

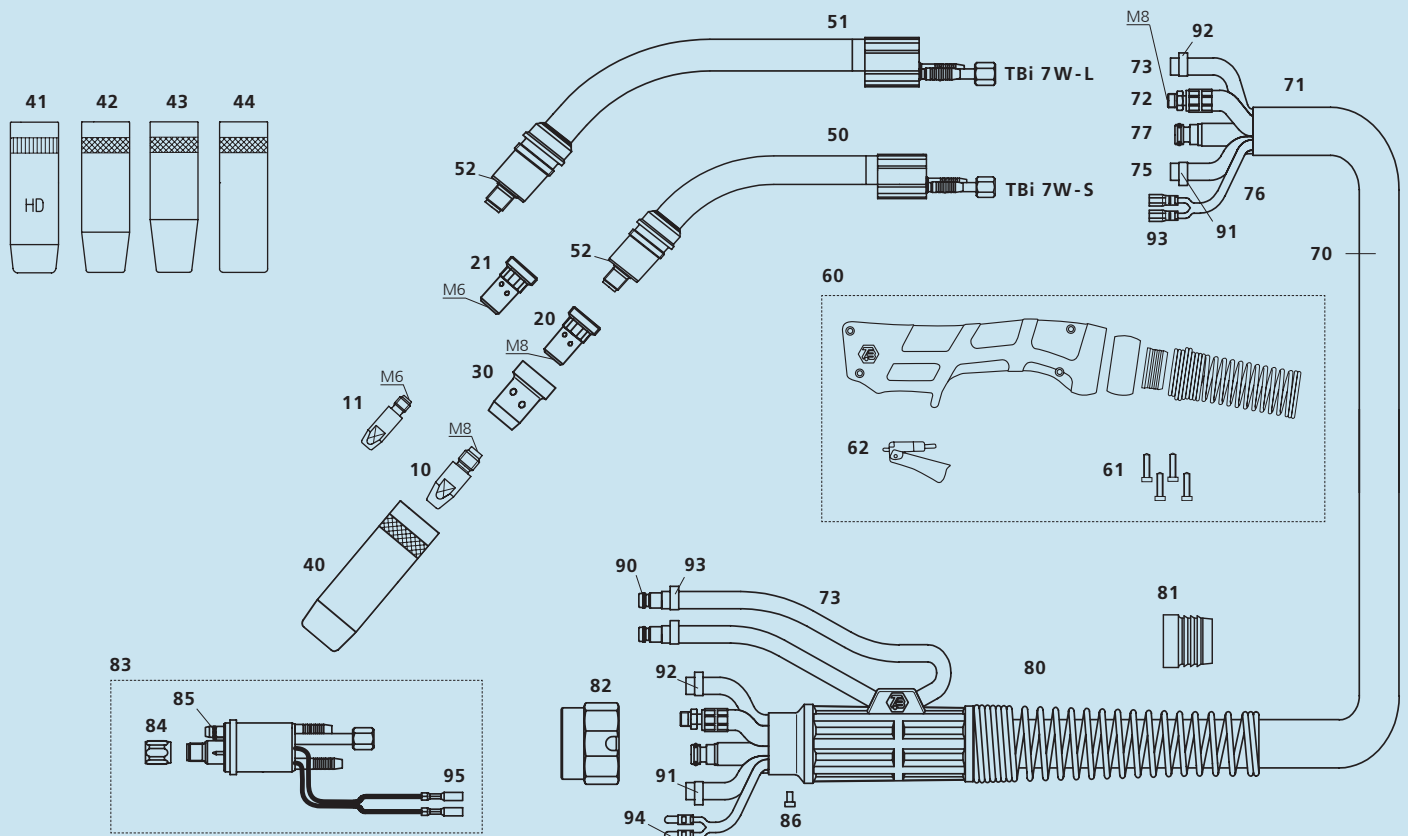
Ordering information for torches

Supplied equipped for steel wire Ø 1.0 mm

Torch	Connector	Length	Part no.
TBi 7W-S	with Euro central connector	3 m	174PK42530
		4 m	174PK42540
		5 m	174PK42550
TBi 7W-L	with Euro central connector	3 m	174PL42530
		4 m	174PL42540
		5 m	174PL42550

Spare parts

Pos.	Description	Part no.
50	Torch neck TBi 7W-S (short), 50°	174P101005
51	Torch neck TBi 7W-L (long), 50°	174P101006
52	Insulating washer	130P002004
60	Handle blue, watercooled, cpl. kit	380P220401
61	Cross recessed screw M3.5x14	100P008413
62	Trigger, red, 2 poles	385P021016



Gas diffuser



Pos.	Description	Part no.
30	thermoset, black	130P002026
	ceramic, white	130P002019
	thermoset HD, brown	130P002031

Gas nozzle



Pos.	Description	Part no.
40	conical, NW 16 mm L= 75.5 mm	345P022171
41	conical, NW 16 mm Heavy Duty L= 75.5 mm	345P022271
42	conical, NW 14 mm L= 75.5 mm	345P023171
43	conical, NW 12 mm only for M6 L= 75.5 mm	345P026171
44	cylindrical, NW 19 mm L= 75.5 mm	345P021171

Pos.	Description	Part no.
70	Cable assembly TBi Top 2000, 2-C	171P4B45_0*
71	Fabric outer cover 25x1.5 mm, cpl.	307P2528_A*
72	Water-power cable Top 2000, blue, 2-C	316P1622_0*
73	Water hose 2-C, black, 5x1.5 mm	303P070000
75	PVC-Gas hose, black 4.5x1.5 mm	302P010000
76	Control cable x.30 m cpl.	301P2304_0*
77	Wire conduit yellow (Top 2000)	356P0C0C_0*

Pos.	Description	Part no.
80	Cable support 3 parts cpl. with spring	701P101071
81	Clamping ring for outer cover	600P102201
82	Adaptor nut	701P001013
83	Central adaptor ESW cpl., moveable pins (Top 2000)	701P101006
84	Sleeve nut M10x1	701P002005
85	O-ring 4.0x1.0 mm (gas nipple)	365P100040
86	Slotted screw M4x6	100P008401
90	Quick connector	701P002064
91	Hose clamp with ring Ø 8.7	373P000087
92	Hose clamp with ring Ø 9.5	373P100095
93	Hose clamp with ring Ø 9.0	373P100090
94	Cable lug, flat	375P000023
95	Insulated connector, male, round	375P000004
96	Insulated connector, female, round	375P000003

Technical Data

Rating at 100% duty cycle
(10 min. cycle)

- Mixed gas: 500 A
- CO₂: 550 A

Cooling method Water cooling

Wire diameter 1.2 - 3.2 mm

Gas flow 28 l/min

Technical specification according to IEC 60974-7

Connection Euro-Central connector
Other connectors are available upon request.

Torch rating will be reduced when using pulsed-arc power sources.



Contact tips

	Pos.		Part no.
M10	▶ 10	ECu, M10x33	340P__1402*
		CuCrZr, M10x33	343P__3402*
M8	11	ECu, M8x30	340P__1262*
		CuCrZr, M8x30	340P__3262*
		Alu, ECu, M8x30	341P__1262*

Tip holder

	Pos.		Part no.
	▶ 20	for contact tip M10, CuCrZ	342P010072
	21	for contact tip M8, CuCrZr	342P008072

▶ = Standard equipment

* At the blank, please insert suitable information for torch length or wire diameter, e.g. 3 for 3 m or 08 for 0.8 mm.

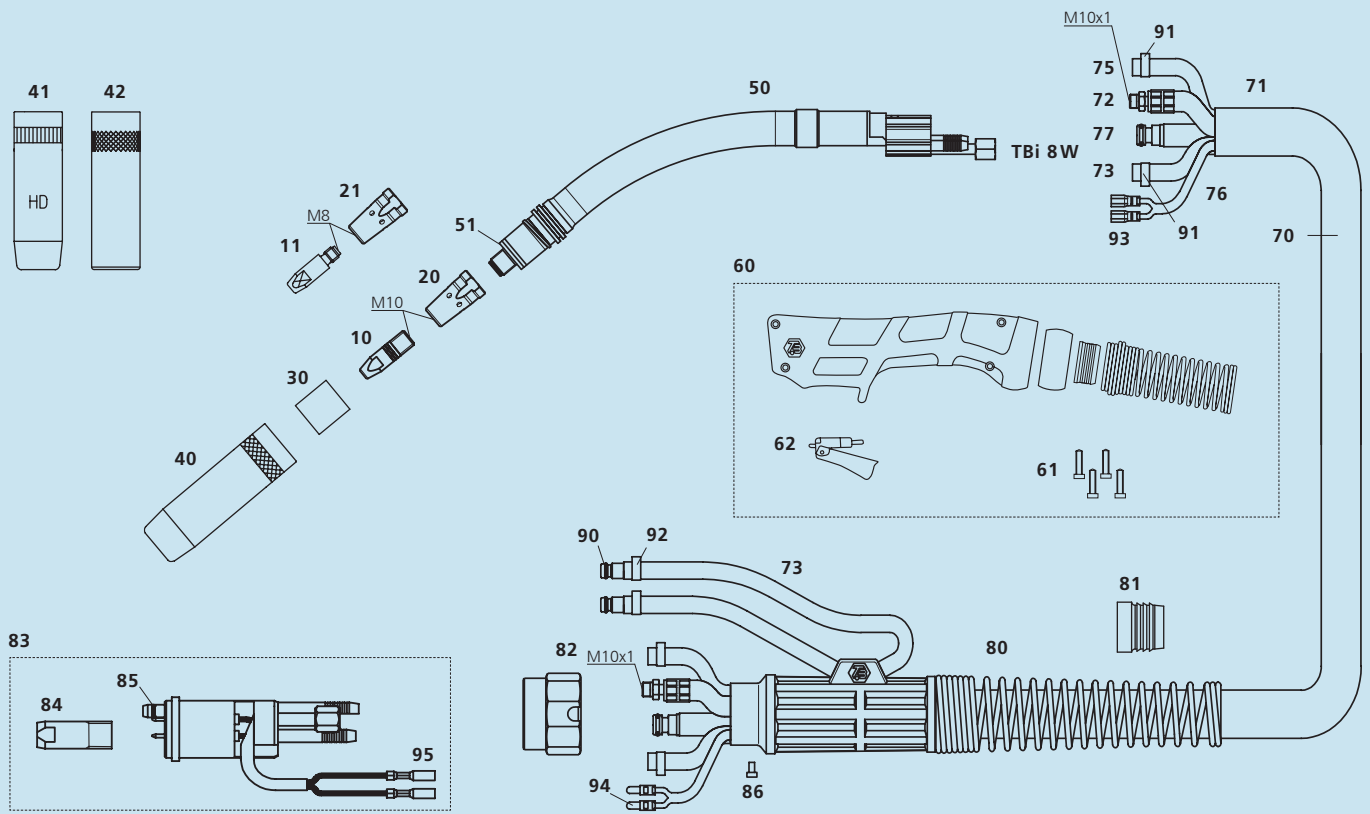
Ordering information for torches

Supplied equipped for steel wire Ø 1.6 mm

TBi 8W	with Euro central connector RWZ		
		3 m	172P542530
		4 m	172P542540
		5 m	172P542550

Spare parts

Pos.	Description	Part no.
50	Torch neck TBi 8W, 40°	172P101001
51	Insulating washer	130P002003
60	Handle blue, cpl. kit TBi 8W	380P220402
61	Cross recessed screw M3.5x14	100P008413
62	Trigger, red, 2 poles	385P021016



Nozzle insulator

Pos.	Description	Part no.
30	ceramic, white	346P054860

Gas nozzle

Pos.	Description	Part no.
40	conical, NW 16 mm nickel plated L= 80.5 mm	345P022173
41	conical, NW 16 mm Heavy Duty L= 80.5 mm	345P922271
42	cylindrical, NW 19 mm nickel plated L= 80.5 mm	345P021071

Pos.	Description	Part no.
70	Cable assembly TBi 8W	172P4S45_0*
71	Fabric outer cover 25x1.5 mm, cpl.	307P2528_A*
72	Water-power cable HD (TBi 8W, 10W)	314P16GG_0*
73	Water hose 2-C, black, 5x1.5 mm for water	303P070000
75	Water hose 2-C, black, 5x1.5 mm for gas	303P070000
76	Control cable x.30 m cpl.	301P2304_0*
77	Wire conduit, black (TBi 8W, 10W)	354P0C0C_0*

Pos.	Description	Part no.
80	Cable support 3 parts cpl. with spring	701P101071
81	Clamping ring for outer cover	600P102201
82	Adaptor nut	701P001013
83	Central adapter RWZ cpl. (8W, 10W), moveable pins	701P001001
84	Centering bolt M14x1 RGZ / RWZ	701P002083
85	O-ring 4.0x1.0 mm (gas nipple)	365P100040
86	Slotted screw M4x6	100P008401
90	Quick connector	701P002064
91	Hose clamp with ring Ø 9.5	373P100095
92	Hose clamp with ring Ø 9.0	373P100090
93	Cable lug, flat	375P000023
94	Insulated connector, male, round	375P000004
95	Insulated connector, female, round	375P000003

Technical Data

Rating at 100% duty cycle
(10 min. cycle)

- Mixed gas: 500 A
- CO₂: 550 A

Cooling method 2-circuit water cooling

Wire diameter 1.0 - 1.6 mm

Gas flow 15 l/min

Technical specification according to IEC 60974-7

Connection Euro-Central connector
Other connectors are available upon request.

Torch rating will be reduced when using pulsed-arc power sources.



Contact tips

	Pos.	Part no.
M10	▶ 10	ECu, M10 x 33 340P__1402*
		CuCrZr, M10 x 33 343P__3402*
M8	▶ 11	ECu, M8 x 30 340P__1262*
		CuCrZr, M8 x 30 340P__3262*
		Alu, ECu, M8 x 30 341P__1262* (Std. for Alu-version)

Tip holder

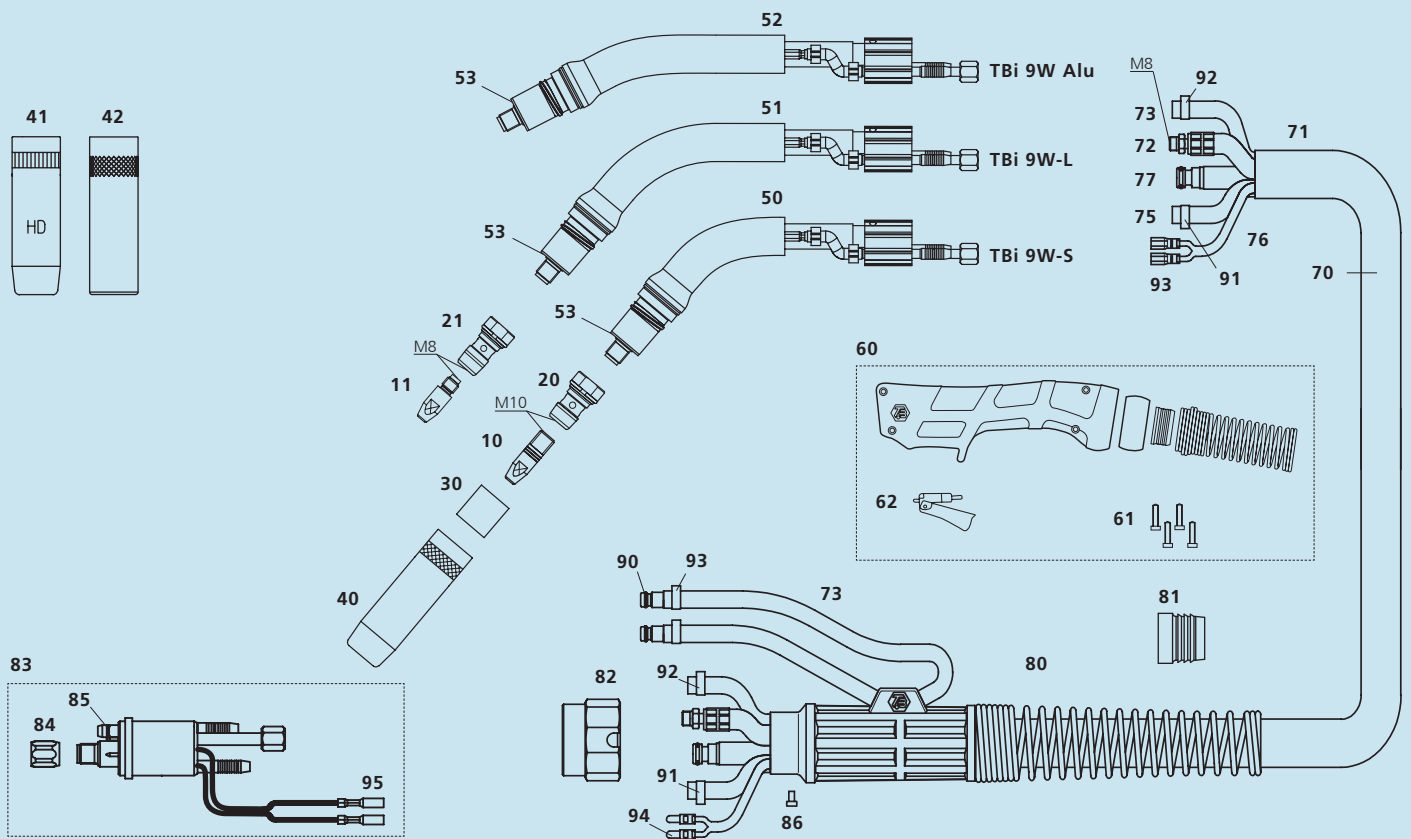
	Pos.	Part no.
	▶ 20	for contact tip M10, CuCrZr 342P010071
	▶ 21	for contact tip M8, CuCrZr 342P008071

▶ = Standard equipment

* At the blank, please insert suitable information for torch length or wire diameter, e.g. 3 for 3 m or 08 for 0.8 mm.

Ordering information for torches

Supplied equipped for steel wire Ø 1.2 mm		with contact tip M10	with contact tip M8
TBi 9W-S	with Euro central connector	3 m 173P442530	3 m 171P442530
		4 m 173P442540	4 m 171P442540
		5 m 173P442550	5 m 171P442550
TBi 9W-L	with Euro central connector	3 m 173P542530	3 m 171P542530
		4 m 173P542540	4 m 171P542540
		5 m 173P542550	5 m 171P542550
Supplied equipped for aluminium wire Ø 1.2 mm			with contact tip M8
TBi 9W Alu	with Euro central connector		3 m 173P5A2530
			4 m 173P5A2540
			5 m 173P5A2550



Nozzle insulator

Pos.	Description	Part no.
30	glass-fiber, white	346P054860

Gas nozzle

Pos.	Description	Part no.
40	conical, NW 16 mm nickel plated L= 80.5 mm	345P022173
41	conical, NW 16 mm Heavy Duty L= 80.5 mm	345P922271
42	cylindrical, NW 19 mm nickel plated L= 80.5 mm	345P021071

Spare parts

Pos.	Description	Part no.
50	Torch neck TBi 9W-S (short) , 50°	173P101002
51	Torch neck TBi 9W-L (long) , 50°	173P101001
52	Torch neck TBi 9W-Alu, 35°	173P101003
53	Insulating sleeve	171P102021
60	Handle blue, cpl. kit (TBi 9W)	380P220402
61	Cross recessed screw M3.5x14	100P008413
62	Trigger, red, 2 poles	385P021016
70	Cable assembly TBi Top 2000, HD	171P4S45_0*
71	Fabric outer cover 25x1.5 mm, cpl.	307P2528_A*
72	Water-power cable Top 2000, black, HD	314P1622_0
73	Water hose 2-C, black, 5x1.5 mm	303P070000
75	PVC-Gas hose, black 4.5x1.5 mm	302P010000
76	Control cable x.30 m cpl.	301P2304_0*
77	Wire conduit yellow (Top 2000)	356P0C0C_0*

Pos.	Description	Part no.
80	Cable support 3 parts cpl. with spring	701P101071
81	Clamping ring for outer cover	600P102201
82	Adaptor nut	701P001013
83	Central adaptor ESW cpl., moveable pins (Top 2000)	701P101006
84	Sleeve nut M10x1	701P002005
85	O-ring 4.0x1.0 mm (gas nipple)	365P100040
86	Slotted screw M4x6	100P008401
90	Quick connector	701P002064
91	Hose clamp with ring Ø 8.7	373P000087
92	Hose clamp with ring Ø 9.5	373P100095
93	Hose clamp with ring Ø 9.0	373P100090
94	Cable lug, flat	375P000023
95	Insulated connector, male, round	375P000004
96	Insulated connector, female, round	375P000003

Technical Data

Rating at 100% duty cycle
(10 min. cycle)

- Mixed gas: 600 A
- CO₂: 650 A

Cooling method 3-circuit water cooling

Wire diameter 1.2 - 1.6 mm

Gas flow 15 l/min

Technical specification according to IEC 60974-7

Connection Euro-Central connector
Other connectors are available upon request.

Torch rating will be reduced when using pulsed-arc power sources.



Contact tips

	Pos.		Part no.
M10	▶ 10	ECu, M10 x33	340P__1402*
		CuCrZr, M10 x33	343P__3402*
M8	11	ECu, M8x30	340P__1262*
		HD, CuCrZr, M8x30	343P__3262*
		Alu, ECu, M8x30	341P__1262*

Tip holder

	Pos.		Part no.
	▶ 20	for contact tip M10, CuCrZr	342P010071
	21	for contact tip M8, CuCrZr (Std. for Alu-version)	342P008071

▶ = Standard equipment

* At the blank, please insert suitable information for torch length or wire diameter, e.g. 3 for 3 m or 08 for 0.8 mm.

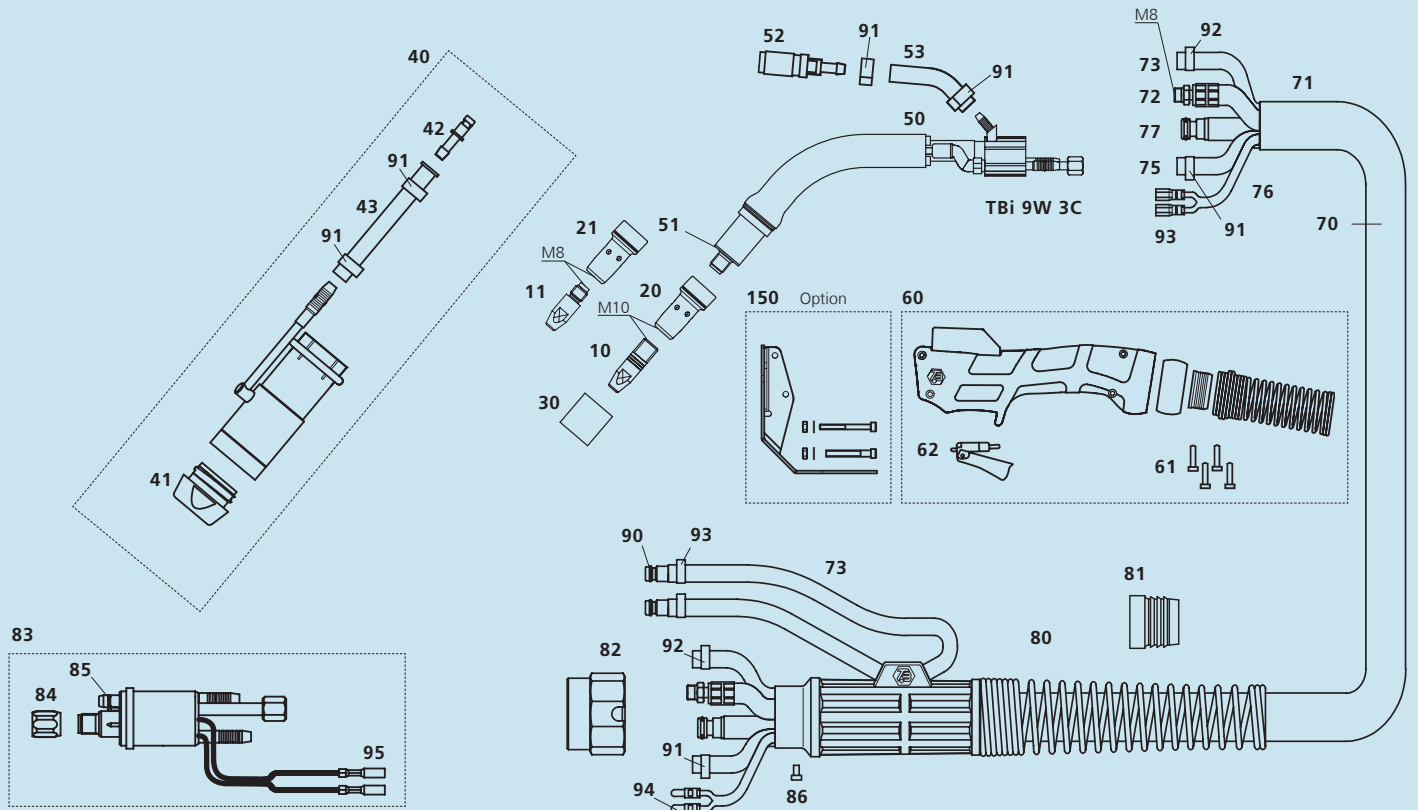
Ordering information for torches

Supplied equipped for steel wire Ø 1.2 mm

TBi 9W 3C	with Euro central connector		
		3 m	171P5YA530
		4 m	171P5YA540
		5 m	171P5YA550

Spare parts

Pos.	Description	Part no.
50	Torch neck TBi 9W 3C, 50°	171P101008
51	Insulator	171P102021
52	Quick connector (4 mm)	171P102045
53	Braided rubber hose, black 4.7x2 mm	303P170000
60	Handle blue, cpl. kit (TBi 9W 3C)	380P220107
61	Cross recessed screw M3.5x14	100P008413
62	Trigger, red, 2 poles	385P021016

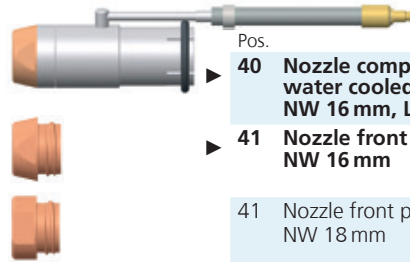


Nozzle insulator



Pos.	Description	Part no.
30	glass-fiber, white	346P054860

Gas nozzle



Pos.	Description	Part no.
40	Nozzle complete kit, water cooled NW 16 mm, L= 81 mm	345PA22471
41	Nozzle front part, NW 16 mm	171P102040
41	Nozzle front part, NW 18 mm	171P102003

Pos.	Description	Part no.
70	Cable assembly TBI Top 2000, HD	171P4S45_0*
71	Fabric outer cover 25x1.5 mm, cpl.	307P2528_A*
72	Water-power cable Top 2000, black, HD	314P1622_0
73	Water hose 2-C, black, 5x1.5 mm	303P070000
75	PVC-Gas hose, black, 4.5x1.5 mm	302P010000
76	Control cable x.30 m cpl.	301P2304_0*
77	Wire conduit yellow (Top 2000)	356P0C0C_0*

Pos.	Description	Part no.
80	Cable support 3 parts cpl. with spring	701P101071
81	Clamping ring for outer cover	600P102201
82	Adaptor nut	701P001013
83	Central adaptor ESW cpl., moveable pins (Top2000)	701P101006
84	Sleeve nut M10x1	701P002005
85	O-ring 4.0x1.0 mm (gas nipple)	365P100040
86	Slotted screw M4x6	100P008401
90	Quick connector	701P002064
91	Hose clamp with ring Ø 8.7	373P000087
92	Hose clamp with ring Ø 9.5	373P100095
93	Hose clamp with ring Ø 9.0	373P100090
94	Cable lug, flat	375P000023
95	Insulated connector, male, round	375P000004
96	Insulated connector, female, round	375P000003

Technical Data

Rating at 100% duty cycle
(10 min. cycle)

- Mixed gas: 650 A
- CO₂: 700 A

Cooling method 2-circuit water cooling

Wire diameter 1.6 - 3.2 mm

Gas flow 28 l/min

Technical specification according to IEC 60974-7

Connection Euro-Central connector
Other connectors are available upon request.

Torch rating will be reduced when using pulsed-arc power sources.



Contact tips

	Pos.	Description	Part no.
M10	▶ 10	CuCrZr, M10x33 ECu, M10x33	343P__3402* 340P__1402*
	11	ECu, M8x30 CuCrZr, M8x30 Alu, ECu, M8x30	340P__1262* 340P__3262* 341P__1262*

Tip holder

	Pos.	Description	Part no.
	▶ 20	for contact tip M10, CuCrZr	342P010072
	21	for contact tip M8, CuCrZr	342P008072

▶ = Standard equipment

* At the blank, please insert suitable information for torch length or wire diameter, e.g. 3 for 3 m or 08 for 0.8 mm.

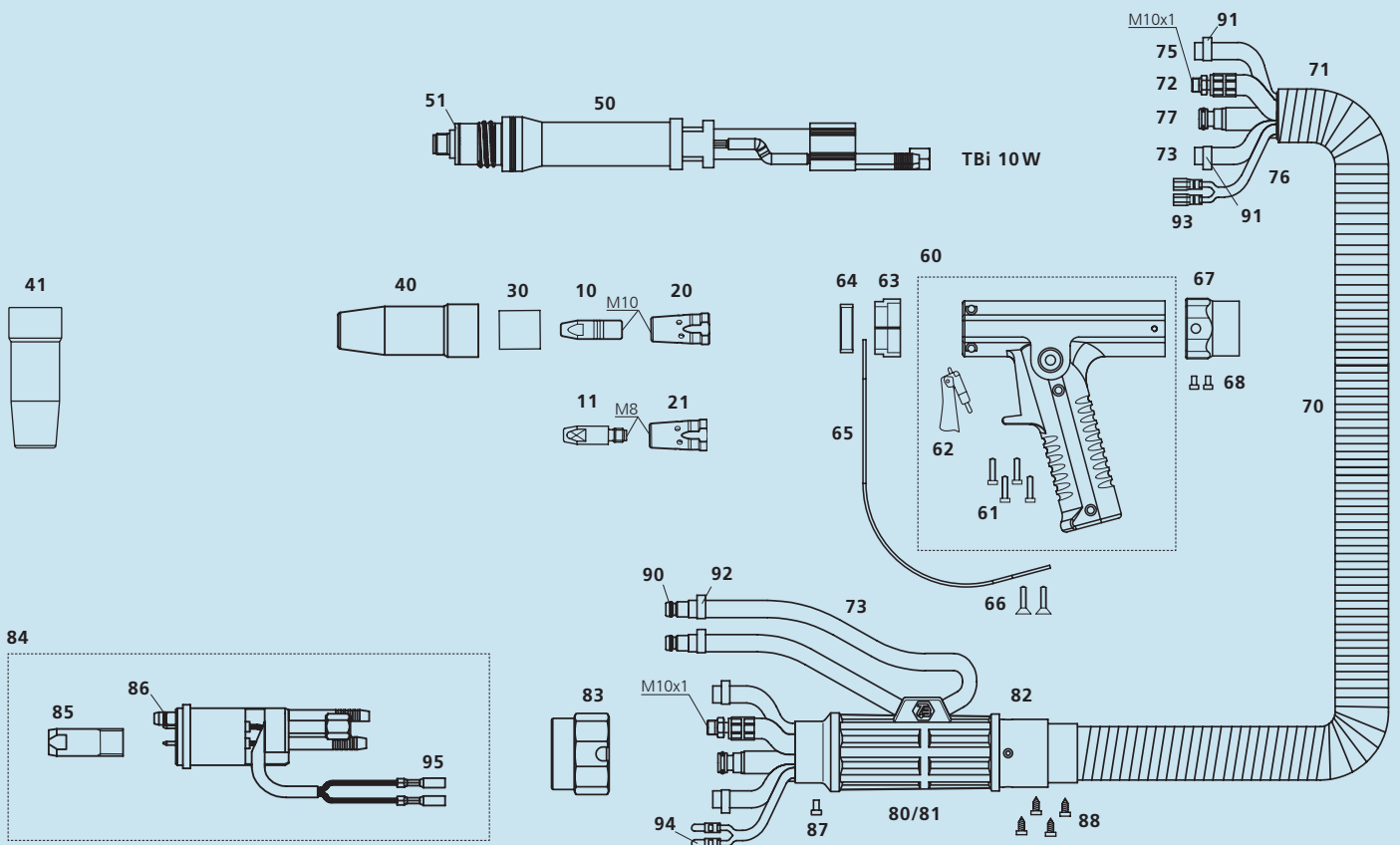
Ordering information for torches

Supplied equipped for steel wire Ø 2.4 mm

TBi 10W	with Euro central connector RWZ	3 m	4 m	5 m	Part no.
		170P172530	170P172540	170P172550	

Spare parts

Pos.	Description	Part no.
50	Torch neck TBi 10W, straight	170P101002
51	Insulating washer	070P102009
60	Pistol-style handle, black, cpl. (TBi 10W)	380P201031
61	Socket cap screw M4x10	100P008403
62	Trigger, red, 2 poles	385P021016
63	Inner ring	170P102025
64	Outer ring	170P102026
65	Shield	381P102004
66	Countersunk screw M4x8	109P096501
67	Front fitting for corrugated tube 29 mm	170P102027
68	Slotted screw M4x6, PVC	100P008408



Nozzle insulator

Pos.	Description	Part no.
30	glass-fiber, white	346P015170

Gas nozzle


Pos.	Description	Part no.
40	conical, NW 16 mm nickel plated L= 82.5 mm	345P022170
41	conical, NW 19 mm nickel plated L= 82.5 mm	345P122170


Pos.	Description	Part no.
70	Cable assembly TBi 10W	170P4S45_0*
71	Fume extraction hose D=29 mm	306P293600
72	Water-power cable HD (8W, 10W)	314P16GG_0*
73	Water hose 2-C, black, 5x1.5 mm for water	303P070000
75	Water hose 2-C, black, 5x1.5 mm for gas	303P070000
76	Control cable x.30 m cpl.	301P2304_0*
77	Wire conduit, black (8W, 10W)	354P0C0C_0*


Pos.	Description	Part no.
80	Cable support housing (only with pos. 81)	701P102070
81	Cable support cover (only with pos. 80)	701P102071
82	Rear fitting for corrugated tube 29 mm	671P102533
83	Adaptor nut	701P001013
84	Central adapter RWZ cpl. (8W, 10W), moveable pins	701P001001
85	Centering bolt M14x1 RGZ / RWZ	701P002083
86	O-ring 4.0x1.0 mm (gas nipple)	365P100040
87	Slotted screw M4x6	100P008401
88	Screw for air regulator	100P797103
90	Quick connector	701P002064
91	Hose clamp with ring Ø 9.5	373P100095
92	Hose clamp with ring Ø 9.0	373P100090
93	Cable lug, flat	375P000023
94	Insulated connector, male, round	375P000004
95	Insulated connector, female, round	375P000003




for torches with euro central connector ESG / ESW

		torches gas cooled	torches water cooled	for wire	color	Part no.
for steel wire	insulated liners	<input checked="" type="checkbox"/>	<input checked="" type="checkbox"/>	0.6 - 0.9	white	324P1338_4*
		<input checked="" type="checkbox"/>	<input checked="" type="checkbox"/>	0.8 - 1.0	blue	324P1545_4*
		<input checked="" type="checkbox"/>	<input type="checkbox"/>	1.0 - 1.2	red	324P2045_4*
		<input checked="" type="checkbox"/>	<input type="checkbox"/>	1.2 - 1.6	yellow	324P2545_4*
	not insulated liners		<input checked="" type="checkbox"/>	1.0 - 1.2	not insul.	322P2045_4*
			<input checked="" type="checkbox"/>	1.2 - 1.6	not insul.	322P2545_4*
for stainless steel wire	not insulated liners		<input type="checkbox"/>	0.8 - 1.2	not insul.	321P2250_4
			<input type="checkbox"/>	1.6 - 2.0	not insul.	321P3550_4

		torches gas cooled	torches water cooled	for wire	color	Part no.
for aluminum and stainless steel wire	PA liners		<input checked="" type="checkbox"/>	1.0 - 1.2	anthracite	328P2040_5*
			<input checked="" type="checkbox"/>	1.2 - 1.6	anthracite	328P2347_5*
	PTFE liners		<input type="checkbox"/>	0.8 - 1.0	blue	326P1540_5*
			<input type="checkbox"/>	1.0 - 1.2	red	326P2040_5*
			<input type="checkbox"/>	1.2 - 1.6	yellow	326P2747_5*
	Carbon-PTFE liners		<input type="checkbox"/>	0.8 - 1.0	black	327P1540_5*
			<input type="checkbox"/>	1.0 - 1.2	black	327P2040_5*
			<input type="checkbox"/>	1.2 - 1.6	black	327P2747_5*
CeraGlide with steel tip		<input type="checkbox"/>	1.0 - 1.2	bordeaux	326P2040_K*	
		<input type="checkbox"/>	1.2 - 1.6	bordeaux	326P2347_K*	

		torches gas cooled	torches water cooled	for wire	color	Part no.
for aluminum and stainless steel wire	PA liners with bronze liner	<input checked="" type="checkbox"/>	<input type="checkbox"/>	1.0 - 1.2	anthracite	328P2040_A*
		<input checked="" type="checkbox"/>	<input type="checkbox"/>	1.2 - 1.6	anthracite	328P2347_A*
	PTFE liners with bronze liner	<input type="checkbox"/>	<input type="checkbox"/>	0.8 - 1.0	blue	326P1540_A*
		<input type="checkbox"/>	<input type="checkbox"/>	1.0 - 1.2	red	326P2040_A*
		<input type="checkbox"/>	<input type="checkbox"/>	1.2 - 1.6	yellow	326P2747_A*
	CeraGlide with bronze liner	<input type="checkbox"/>	<input type="checkbox"/>	1.0 - 1.2	bordeaux	326P2040_H*
<input type="checkbox"/>		<input type="checkbox"/>	1.2 - 1.6	bordeaux	326P2347_H*	

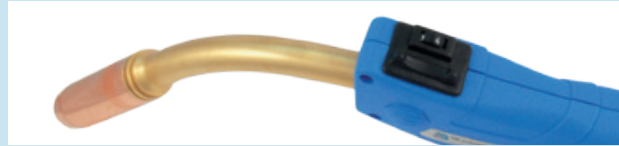
for torches with euro central connector RGZ / RWZ

		torches gas cooled	torches water cooled	for wire	color	Part no.
for steel wire	insulated liners	<input checked="" type="checkbox"/>	<input type="checkbox"/>	(1.2) 1.6 - 2.0	orange	324P2863_4*
		<input checked="" type="checkbox"/>	<input type="checkbox"/>	1.6 - 2.4	black	324P3570_4*
		<input checked="" type="checkbox"/>	<input type="checkbox"/>	2.4 - 3.2	grey	324P4570_4*
	not insulated liners		<input checked="" type="checkbox"/>	(1.2) 1.6 - 2.0	not insul.	322P2863_4*
			<input checked="" type="checkbox"/>	1.6 - 2.4	not insul.	322P3570_4*
		<input checked="" type="checkbox"/>	2.4 - 3.2	not insul.	322P4570_4*	

		torches gas cooled	torches water cooled	for wire	color	Part no.
for aluminum and stainless steel wire	PTFE liners	<input type="checkbox"/>	<input type="checkbox"/>	1.6 - 2.8	white	326P4060_5*

recommended optional

* At the blank, please insert suitable information for torch length, e.g. 3, 4 or 5 for 3 m, 4 m or 5 m long torches.



<p>FM1 Double action switch (Up / Down)</p>		<p>Spare parts</p> <table border="1"> <tbody> <tr> <td>Module FM1 complete</td> <td>600P101031</td> </tr> <tr> <td>Control cable 3-pole with front connector, 6.5 m</td> <td>301PFM0001</td> </tr> <tr> <td>Module FM1 complete, for connection to Fronius</td> <td>600P101038</td> </tr> <tr> <td>Control cable 7-pole with front connector, 6.5 m</td> <td>301PFM0002</td> </tr> <tr> <td>Rubber cover FM1</td> <td>600P102165</td> </tr> </tbody> </table>	Module FM1 complete	600P101031	Control cable 3-pole with front connector, 6.5 m	301PFM0001	Module FM1 complete, for connection to Fronius	600P101038	Control cable 7-pole with front connector, 6.5 m	301PFM0002	Rubber cover FM1	600P102165
Module FM1 complete	600P101031											
Control cable 3-pole with front connector, 6.5 m	301PFM0001											
Module FM1 complete, for connection to Fronius	600P101038											
Control cable 7-pole with front connector, 6.5 m	301PFM0002											
Rubber cover FM1	600P102165											
<p>FM2 Two double action switches (Up / Down)</p>		<p>Spare parts</p> <table border="1"> <tbody> <tr> <td>Module FM2 complete</td> <td>600P101032</td> </tr> <tr> <td>Control cable 7-pole with front connector, 6.5 m</td> <td>301PFM0002</td> </tr> <tr> <td>Rubber cover FM2</td> <td>600P102166</td> </tr> </tbody> </table>	Module FM2 complete	600P101032	Control cable 7-pole with front connector, 6.5 m	301PFM0002	Rubber cover FM2	600P102166				
Module FM2 complete	600P101032											
Control cable 7-pole with front connector, 6.5 m	301PFM0002											
Rubber cover FM2	600P102166											
<p>FM3 4-way pushbutton</p>		<p>Spare parts</p> <table border="1"> <tbody> <tr> <td>Module FM3 complete</td> <td>600P101033</td> </tr> <tr> <td>Control cable 7-pole with front connector, 6.5 m</td> <td>301PFM0002</td> </tr> <tr> <td>Rubber cover FM3</td> <td>600P102167</td> </tr> </tbody> </table>	Module FM3 complete	600P101033	Control cable 7-pole with front connector, 6.5 m	301PFM0002	Rubber cover FM3	600P102167				
Module FM3 complete	600P101033											
Control cable 7-pole with front connector, 6.5 m	301PFM0002											
Rubber cover FM3	600P102167											
<p>FM4 Spin-wheel poti 10kΩ</p>		<p>Spare parts</p> <table border="1"> <tbody> <tr> <td>Module FM4 complete</td> <td>600P101041</td> </tr> </tbody> </table>	Module FM4 complete	600P101041								
Module FM4 complete	600P101041											
<p>FM5 Double action switch (Up / Down) with potentiometer 10kΩ</p>		<p>Spare parts</p> <table border="1"> <tbody> <tr> <td>Module FM5 complete</td> <td>600P101035</td> </tr> <tr> <td>Control cable 7-pole with front connector, 6.5 m</td> <td>301PFM0002</td> </tr> <tr> <td>Rubber cover FM5</td> <td>600P102169</td> </tr> </tbody> </table>	Module FM5 complete	600P101035	Control cable 7-pole with front connector, 6.5 m	301PFM0002	Rubber cover FM5	600P102169				
Module FM5 complete	600P101035											
Control cable 7-pole with front connector, 6.5 m	301PFM0002											
Rubber cover FM5	600P102169											
<p>FM7 7-segment Display with Double action switch (Up / Down)</p>		<p>Spare parts</p> <table border="1"> <tbody> <tr> <td>Module FM7 complete</td> <td>600P101037</td> </tr> <tr> <td>Rubber cover FM7</td> <td>600P102170</td> </tr> </tbody> </table>	Module FM7 complete	600P101037	Rubber cover FM7	600P102170						
Module FM7 complete	600P101037											
Rubber cover FM7	600P102170											

All remote control modules are equipped with 7- or 12-pole connectors. Custom built modules and bus-systems available on request.

Ready for Tomorrow.

© 2015 Tbi Industries GmbH. All rights reserved. Subject to change without notice. Excerpts and reprints not permitted. Nr. DOKP112002, 11/2015.

Tbi Industries GmbH
Ruhberg 14
D-35463 Fernwald-Steinbach
P.O. Box 67
D-35461 Fernwald-Steinbach

Tel. + 49 6404 9171-0
Fax. + 49 6404 9171-40
Internet: www.tbi-industries.com
E-mail: info@tbi-industries.com